



CLC Cross-Asset Strategic Alpha Fund

September 2024

As of 30 September 2024

This document has not been reviewed by Securities Commission Malaysia ("SC"), who takes no responsibility for its contents. The disclosure of our SC licenses herein does not mean the SC endorses or recommends the investment strategy described herein. This document is for sophisticated investors' use only, and must not be distributed to retail investors.

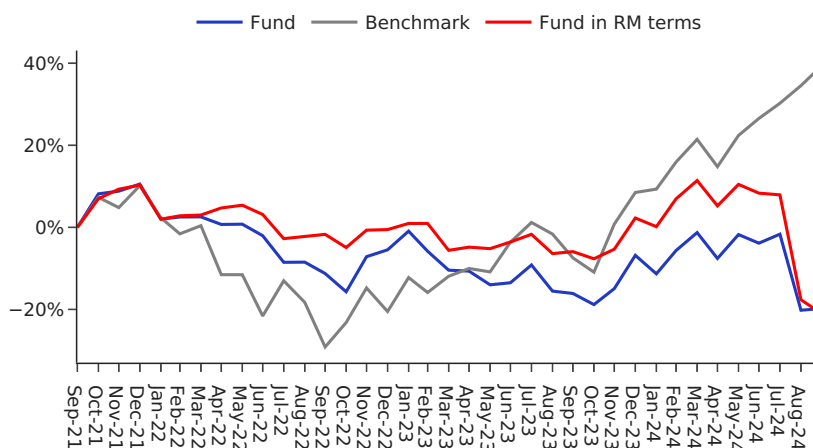
Fund Objective

The Fund aims to provide long-term capital growth with a focus on absolute return and diversification across multiple asset classes and geographical regions.

The goal is to achieve high risk-adjusted absolute returns through a strategic asset allocation framework by replicating a US university endowment model, while also protecting capital and profit from equity bear markets through dynamic asset allocation; hence targeting risk-adjusted absolute returns superior to a traditional long-only equity fund or a 60/40 balanced fund over a market cycle.

The firm's investment philosophy is to apply real-world discretionary trading strategies to the rigour of a quantitative process focusing on delivering superior risk-adjusted absolute returns.

Fund Performance



*Source: Cross Light Capital, data as of 30 September 2024.

Fund Information

Company Cross Light Capital Sdn. Bhd.

SC License [eCMSL/A0367/2020](#)

Fund Manager [CIO Jason Lee, CFA](#)

SC License [eCMSRL/C0200/2020](#)

Trustee Pacific Trustees Berhad

Fund Administrator Bolder Fund Services (Singapore)

External Auditor Crowe Malaysia PLT

Fund Category Global Multi-Asset

Fund Type Hedge Fund (Mixed Assets)

Fund Style Alternative, Use of Leverage, Long and Short Exposures, Tactical Asset Allocation

Base Currency USD

Fund Inception 01 October 2021

Unit NAV USD 0.4011

Min. Initial Investment USD 100,000

Min. Additional Investment USD 10,000

Benchmark (2/3) x [iShares Core Growth Allocation ETF (AOR) + SPDR S&P 500 ETF Trust (SPY) + IQ Hedge Multi-Strategy Tracker ETF (QAI)]

Cumulative Performance (%)

	1 Month	3 Months	6 Months	1 Year	3 Years	Since Fund's Inception	YTD
Fund	0.53	-16.56	-18.75	-4.37	-19.78	-19.78	-13.91
Benchmark	3.53	N/A	14.69	50.49	39.30	39.30	28.38

Risk and Performance Metrics

	Fund	Benchmark
CAGR	-7.08%	11.68%
Estimated VaR (95%)	7.20%	11.51%
Annualized Volatility	19.73%	23.83%
Max Drawdown	-27.82%	-35.70%
Sharpe Ratio	-0.36	0.49
Sortino Ratio	-0.49	0.86
Correlation to SPY (Monthly)	0.33	0.98

Exposure Metrics (relative to NAV)

Gross Exposure	137.60%
Net Exposure	122.05%
Net Beta-Adjusted Exposure	94.11%
Long Exposure	129.82%
Short Exposure	7.77%

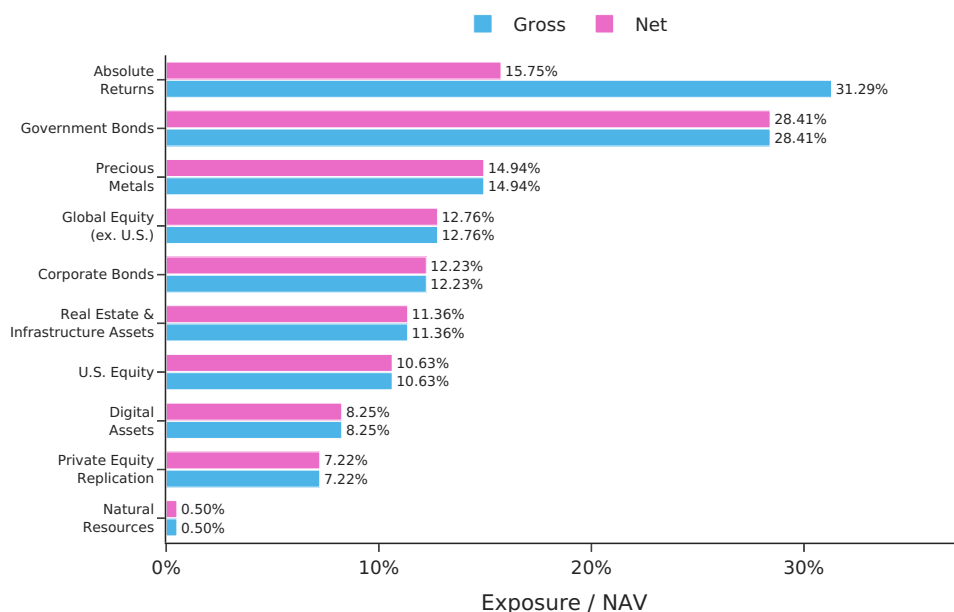
Monthly Performance (%)

	Jan	Feb	Mar	Apr	May	Jun	Jul	Aug	Sep	Oct	Nov	Dec	YEAR
2024	-4.85	6.41	4.63	-6.39	6.31	-2.14	2.28	-18.86	0.53				-13.91
2023	4.82	-4.94	-4.90	-0.26	-3.74	0.59	5.02	-7.02	-0.67	-3.24	4.79	9.55	-1.41
2022	-7.73	0.50	0.03	-1.80	0.07	-2.78	-6.62	0.05	-3.04	-5.02	10.16	1.80	-14.50
2021										8.17	0.61	1.59	10.56

Fees and Liquidity Structure

Sales Charge	Up to 5% Initial Sales Charge
Annual Management Fee	2% of NAV
Performance Fee	20% Performance Fee Subject to High-Water Mark
Withdrawal Fee	3% in year 1 2% in year 2 1% in year 3 0% after year 3
Liquidity	Quarterly Liquidity

Asset Class Allocation



Fund Commentary

The Fund returned 0.53% for the month. The reference portfolio or benchmark was 3.53% for the month. The Fund's monthly correlation to equities (SPY) is 0.33.

Our [strategic asset allocation framework](#) replicates the US university endowment model by investing in a diversified portfolio of multiple asset classes (i.e., Private Equity replication, Absolute Returns, Precious Metals, Natural Resources, Real Estate and Infrastructure Assets, US and Global Equities (ex-US), Government Bonds and Corporate Bonds) using liquid, exchanged listed ETFs. The highlight of the **gross attribution** for the month was positive attribution from long exposures in the Global Equity (ex. U.S.), Precious Metals, and Real Estate and Infrastructure Assets of 0.71%, 0.45%, and 0.3%. Exposures in the other asset classes resulted in negative attribution led by Absolute Returns, and Government Bonds which delivered negative attribution of -1.19%, and -0.61% respectively.

We adopt [dynamic asset allocation](#) to adapt and adjust asset class allocations; highlights of our **asset class exposures at month end** include net long exposure in Government Bonds, Absolute Returns, Precious Metals, and Global Equity (ex. U.S.) representing 28.41%, 15.75%, 14.94%, and 12.76% respectively. Long exposures in Corporate Bonds closed higher at 12.23%.

[Disciplined risk management](#) is a key objective of the Fund. **Risk exposures** closed higher in the month with gross exposure at 137.60% (comprising long exposure of 129.82% plus short exposure of 7.77%) versus 132.26% last month. Net exposure closed the month higher at 122.05% (comprising long exposure of 129.82% minus short exposure of 7.77%) and net beta adjusted exposure closed the month lower at 94.11% versus 100.60% last month. Value at Risk (VAR) using 95% confidence level closed the month at 7.20% i.e., 95% confident that the worst daily loss will not exceed 7.20%. We employ a combination of both a systematic and discretionary approach to risk management aiming to reduce risk during periods of (1) higher volatility and (2) drawdowns in the NAV of the Fund. Our systematic risk reduction remained at -30.0%.

We continue to focus on a hybrid approach of discretionary fundamental investing and systematic investing emphasizing data-driven insights, scientific testing, and disciplined portfolio construction techniques.

Disclaimer

This document is prepared by Cross Light Capital Sdn. Bhd. ("CLC"), Companies Commission Malaysia registration no. 201901034174 (1343504-X). It is not intended to be an offer or invitation to buy or sell any securities. The information contained herein has been obtained from sources believed in good faith to be reliable; however, CLC does not guarantee its accuracy or completeness. Past and back test performance of the fund is not indicative of its future performance. NAV and performance figures shown are based on the lead series launched in October 2021. The Fund is United States Dollar denominated with related foreign exchange risk exposures. The returns of the Fund in Ringgit Malaysia terms are reported using spot foreign exchange rate historical pricing from publicly available data such as [exchangerate.host](#). Prices and distribution payable, if any, can go down as well as up. Investors are advised to read and understand the information provided carefully. The fund may not be suitable for all investors and if in doubt, investors should seek independent advice. The Product Highlights Sheet ("PHS") for the fund is available and investors have the right to request a copy. Investors are advised to read and understand the contents of the PHS, the offering documents including the Information Memorandum ("IM") and Trust Deed, including any supplementary material, as the case may be. To obtain copies, please contact CLC. Investing in the fund will incur fees and charges. Please consider the fees and charges involved before investing. Specific risks of the fund include equity risk, short exposure and leverage risk, currency risk, country risk, liquidity risk, credit/default risk, foreign exchange rate risk and interest rate risk as disclosed in the PHS. Although attempts have been made to disclose all possible risks involved, the fund may still be subject to any inherent risk that may arise beyond our reasonable contemplation. The fund may be wholly unsuited for you if you are averse to the risk arising out of and/or in connection with the fund. You should seek your own financial advice from an appropriately licensed and qualified adviser before investing.